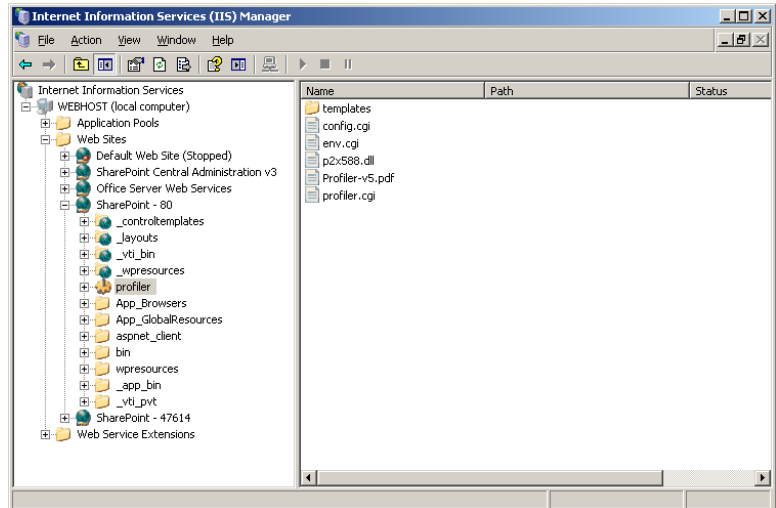


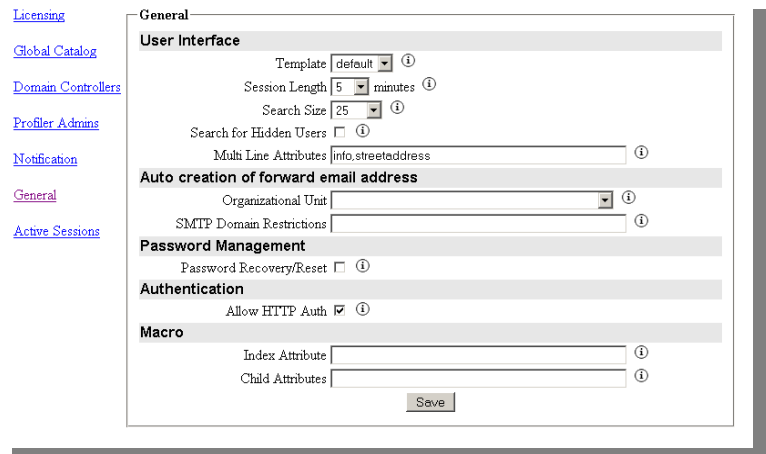
Profiler v5 - SharePoint Integration

Profiler can be integrated into SharePoint easily using the following steps. We will use the documentation's previous installation/configuration settings as the basis for this configuration. In this example we will embed Profiler in a SharePoint Page Viewer Web Part. We will also be using integrated authentication so the SharePoint user credentials will be passed to Profiler automatically.

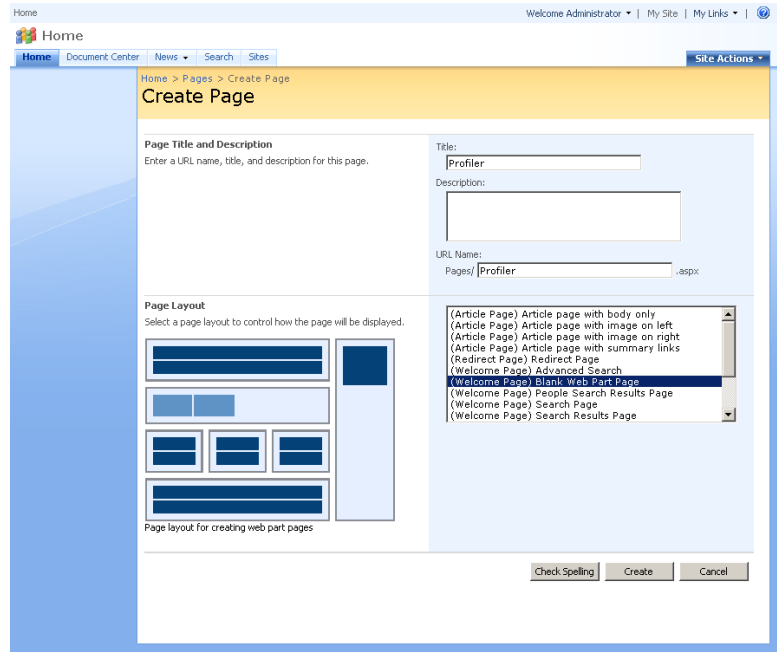
Install Profiler on to your SharePoint server using the Software Installation instructions. The difference lies in how IIS is configured. Follow the IIS Configuration and Web Service Extension instructions. Rather than creating an alias on the default website, create the alias on the SharePoint website. Use the figure to the right to better understand the final configuration.



From the Profiler configuration screen make sure that **Allow HTTP Auth** is checked in the General settings. This will allow the credentials from SharePoint to pass through to Profiler.



To begin the SharePoint configuration, login to SharePoint as a SharePoint administrator using your web browser. Next, create a new Blank Web Part Page using the following settings as seen on the right.



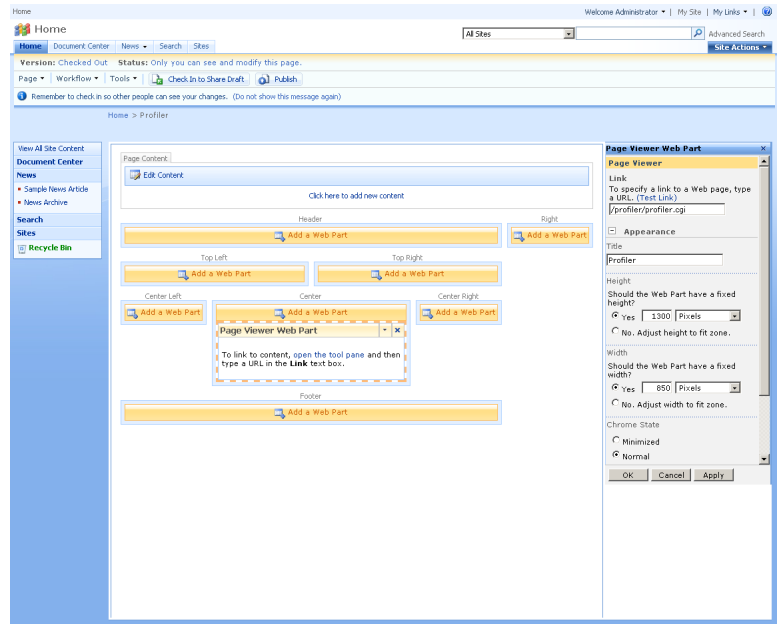
From here add a Page Viewer Web Part in the center of the page.

Add Web Parts to Center



Next, configure the Page Viewer Web Part using the tool bar on the right side of the screen. In this example we do not have to provide the full URL to Profiler since Profiler is installed on the same web server as SharePoint. Also note the fixed size of the window for Profiler. These settings can be adjusted later.

Once the settings are applied, you should see the Profiler user interface already logged in.



Next, click Publish to publish the new Profiler integrated page.

